



denise e beppe berna

---

... synthesis of the incredible

... synthesis of the  
incredible



© denise e beppe berna  
2016, bologna, italy

all ... by  
beppe berna

works





Fiera Bergamo  
Via Lunga, Bergamo

**Stand n. 48**  
**Padiglione Moroni**

---

January 14 – 22, 2017

# Bamana

133X

**Ciwara**, Bamako or Beledugu style.

L. cm. 64,5

*Old French collection.*

*Pierre Darteville, Brussels.*







## Mbunda

132X

**Sachihongo**, large initiation mask.

Early 20th century.

H. cm. 38

*Old French collection.*

*Pierre Darteville, Brussels.*



# Archaic Dogon

135X

Large male figure.

16th / 18th century.

H. cm. 44,5

*Collected by Franco Monti in the  
early 1960's.*

*Joaquin Pecci, Brussels.*

*Published [n.1] in "Sacrifice", 2011,  
Galerie Joaquin Pecci, Brussels.*







## Mumuye

126X

Superb male figure of surreal intonation.

A masterpiece of the Mumuye art.

Late 19th / early 20th century.

H. cm. 75,5

*Collected by Edward Klejman in the late 1960's.*

*French private collections.*





## Huari

13E

Votive human bust, in wood.

Peru.

700/1000 A.D.

H. cm. 23,8

*From the collection of a French nobleman (the 1950's).*





## Wurkun

127X

**Kundul**, male guardian figure.

H. cm. 37

*Mia van Bussel, Amsterdam.  
European private collections.*



# Banda

134X

Rare harp **Kundi**.

Late 19th / early 20th century  
(before the 1930's).

L. cm. 66

*Old Dutch collection.  
Pierre Darteville, Brussels.*





# Mambila

197U

'Reverse legs' **tadep dua**  
Only three samples  
known.

H. cm. 36,5

*Collected by E. Klejman in  
the early 1970's.  
Gigi Pezzoli collection, Milan.*





# Western Chamba

125X

Extremely rare maternity.

H. cm. 100

*Collected by E. Klejman in the 1970's.  
Galerie Monbrison, Paris.  
Private collection, Paris.*







## Wè - Nguéré

129X

Judicial or war mask.

H. cm. 30,5

*Old French collection.*

*Edward Klejman, Paris, from the early 1990's until 2016.*





## Dogon, N'duléri

137X

Extremely rare figure of a **nommo**.

18th / 19th century.

H. cm. 40

*Collected by Georgette and Nicolas  
Lavrovski, circa 1950's.  
French private collections.*





## Eastern Montol

131X

Magic figure of the **komtin** society.

H. cm. 36

*Collected by E. Klejman between 1968 and 1972.*

*Private collection, Paris.*





# Bamana

124X

**Ciwara**, Segou style.

H. cm. 91

*Old French collections.*





## Archaic Dogon

136X

Hermaphrodite primordial genius.

16th / early 19th century.

H. cm. 26

*Galerie Numaga, Auvernier, 1973*

*Private collection, Paris, 1973*

*Joseph Wolpe, Cape Town, 1974*

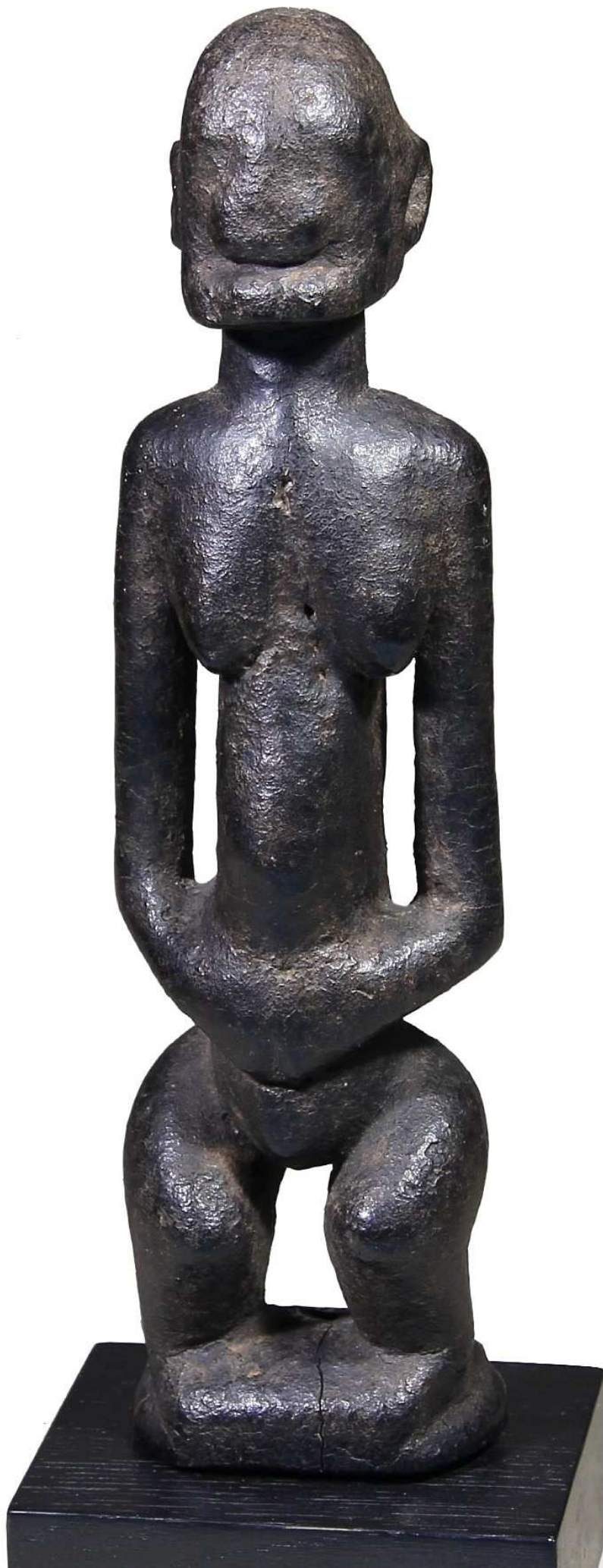
*Jean Herment, Metz*

*Leslie Sacks Collection, Los Angeles.*

### *Publications:*

*- Dégué-Dégué: les Tellem et les Dogons, Galerie Numaga, Auvernier, 1973, pp.2 e 57, ill. p.3*

*- African Art from the Leslie Sacks Collection, Refined Eye, Passionate Heart, Skira 2013, p.278*





# Montol

130X

Magic figure of the **komtin** society.

H. cm. 42,5

*Collected by Edward Klejman  
between 1968 and 1972.  
Private collection, Paris.*



... for more information: [berna@debberna.it](mailto:berna@debberna.it)



**Denise e Beppe Berna**

arte tribale - arte archeologica  
tribal art - ancient art

Via Borgo S. Pietro 43 - 40126 Bologna, Italy

Phone +39 051 253175

*su appuntamento - by appointment only*

copyright © d. & b. berna 2017